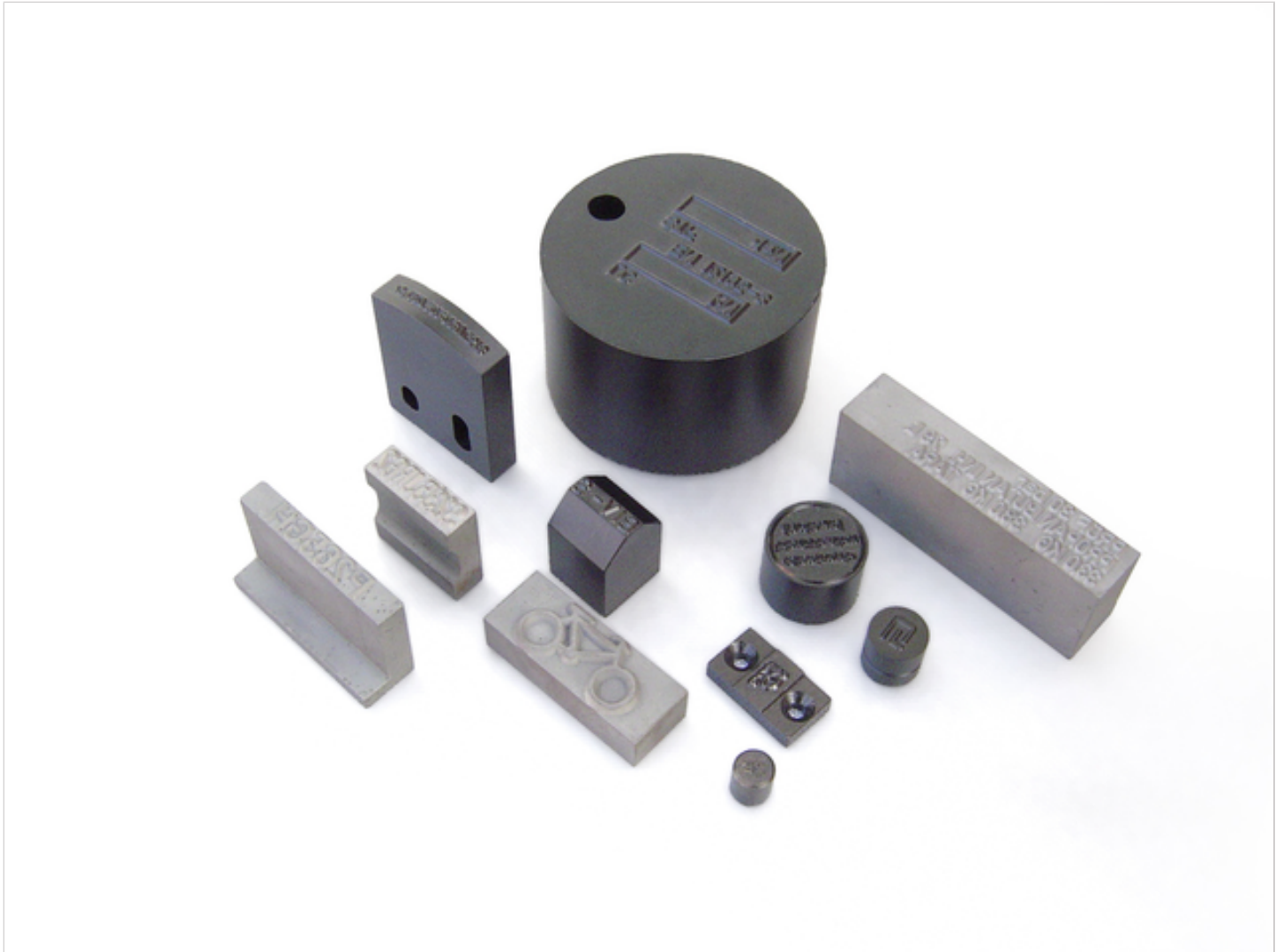


MACHINE STAMP



Images similar

Manufacturing of all forms of engraved steel stamps for presses, impact presses and percussion presses in accordance with requirements.

Machine stamp

Engraved steel stamp for integration into machines. We manufacture the stamps for fixtures or with machine mounts, in accordance with customer requirements or drawings. Depending on application, the embossing stamps are engraved in high quality stamping steel.

Engravings:

- Sharp
- Dotted
- Plane marking
- On a radius

- Concave
- Convex

Similar / alternative products



MACHINE TYPE HOLDER
for individual steel types



MACHINE STAMPING
UNIT